

TEXTILES

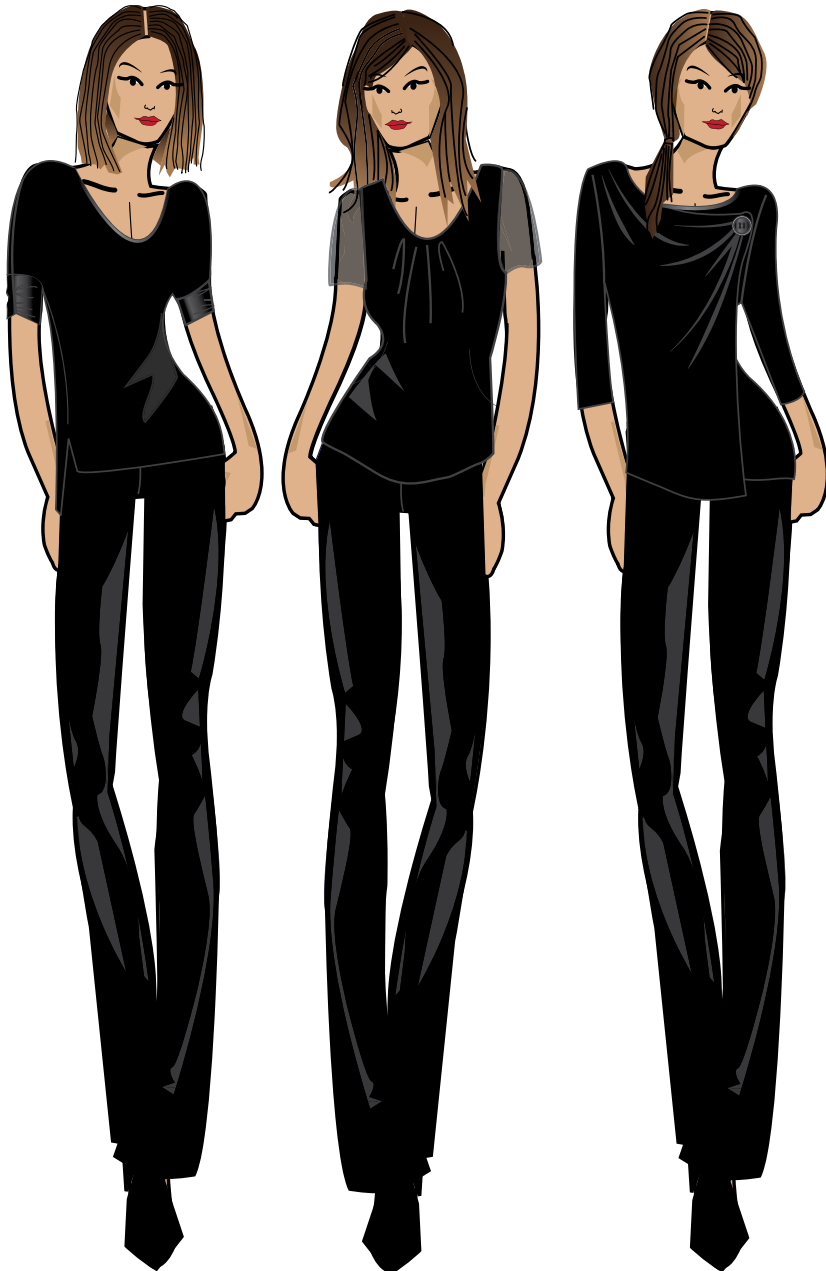
*THE POWER OF PERFORMANCE,
DURABILITY AND COMFORT.*

Textiles play an integral role in creating functional garments. We combine fashion with innovative design for a variety of job functions. Some of our fabrics are chlorine resistant, have UPF 50 sun protection, pill resistant, stain resistant and wrinkle resistant. We've successfully married technical fabrics with style to out-perform the industry expectations.





Introducing our EcoFriendly Collection



Dress to impress, confident you're doing your part to help the environment. Our new collection supports energy and resource conservation because it's made of fabric derived from 100% recycled materials— post industrial fiber waste and post consumer plastics.

This new EcoFriendly Collection conserves our natural resources by reducing energy consumption in the making. In addition, these garments are washable in cold water, and quick to dry — two more reasons why this collection is an environmental choice. At the same time these special designs meet the Noel Asmar brand standards for strength and durability. Longer lasting uniforms mean less waste.

Together we can make a difference, one uniform at a time.

Visit www.NoelAsmarUniforms.com for more information.

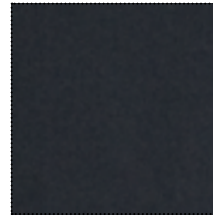


Our EcoFriendly Collection is currently available in our classic black fabric.

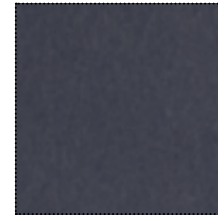
black

Signature Fabric

Feel great wearing the perfect blend of spandex to allow for ease movement throughout your work day. Perfect for use within the spa, housekeeping, and various shirting requirements. This high tech performance fabric is naturally stain, wrinkle and pill resistant.



black



charcoal



powder blue



spicy berry



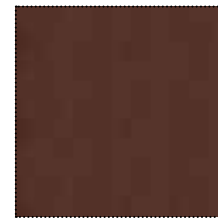
plum



tan



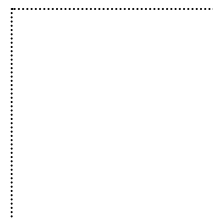
chocolate



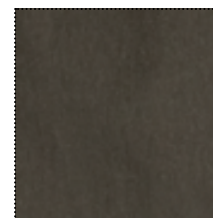
kahlua



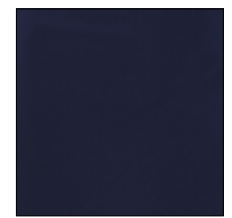
light sage



white



olive



navy

SIGNATURE FABRIC GARMENT CARE

Uniforms — Poplin: Poly, Nylon Spandex Blend selected for comfort and ease of care

Washing: Low temperatures, inside out. Do not bleach. Wash white separately, do not use fabric softeners. Hang to dry or tumble dry garments on low heat for optimal results. Iron on low heat setting, iron the reverse side of the cloth to prevent shine marks.

Remove stains with non-chlorine, non-bleach products to be used sparingly to clean tough spots only, do not soak garments in special cleaning agents. Do not spray spot cleaners on embroidered logos.

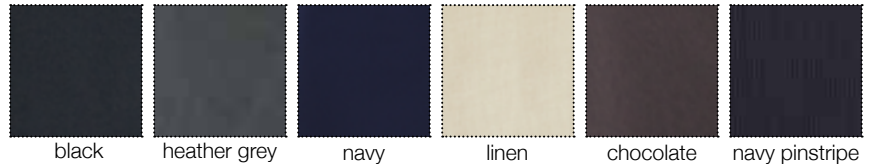
Suiting Fabric



Style: HCJ001

Our Signature Suiting Fabric is chic, yet comfortable. In addition to being breathable, our Signature Suiting Fabric has stretch to allow the person wearing it to look and feel great no matter what their job function.

IN STOCK COLORS:



CUSTOM COLORS:



“Suiting pieces that are still in rotation have been laundered up to 102 times and signature uniforms up to 150 times. The quality is great.”

*Uniform Control
CityCenter Las Vegas*

SUITING COLLECTION GARMENT CARE

Suiting — polyester, rayon & spandex

Shirting — fabric content may vary, see your garment tag

Suiting: Dry clean only.

Wool Suiting: Dry clean only.

Cotton Shirting: low temperatures, inside out. Do not bleach.

Wash white separately, do not use fabric softeners. Hang to dry or tumble dry garments on low heat for optimal results.

Iron on low heat setting, iron the reverse side of the cloth to

prevent shine marks. Remove stains with non-chlorine, non-bleach products to be used sparingly to clean tough spots only, do not soak garments in special cleaning agents. Do not spray spot cleaners on logos.

Women’s Dress Tops: Wash cold, in delicate cycle with like colors. Hang to dry. Low iron if required. Also suitable for dry cleaning.

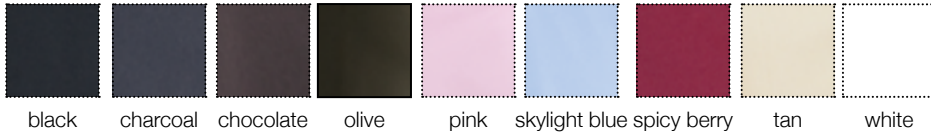
Basic Dress T: Wash cold, in delicate cycle with like colors. Hang to dry. Low iron if required. Also suitable for dry cleaning.

Active Wear Fabric

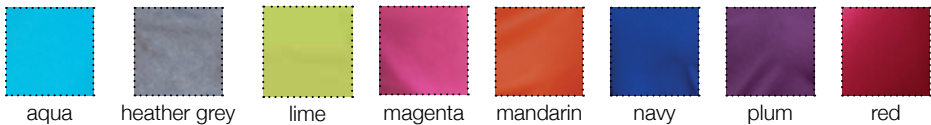
High tech performance fabrics offer the protection and comfort to carry you through your activities in confidence. Wear it to the gym, after the gym or in between workouts. This unique fabric has built in all day UPF 50 sun protection.

Our fabric is treated with Chitosante, a biodegradable, non-toxic biomass extract from natural sources. Chitosante treatment makes the fabric soft, absorbent, breathable, durable, fast-drying, static-free, wrinkle proof and pill resistant. It strongly inhibits odor and has antibacterial properties.

IN STOCK COLORS:



CUSTOM COLORS:



CHITOSANTE GARMENT CARE

Fabric — 92% polyester, 8% spandex

Washing: low temperatures, inside out. Do not bleach. Wash white separately, do not use fabric softeners. Hang to dry or tumble dry garments on low heat for optimal results. Iron on low heat setting, iron the reverse side of the cloth to prevent shine marks. Remove stains with non-chlorine, non-bleach products to be used sparingly to clean tough spots only, do not soak garments in special cleaning agents. Do not spray spot cleaners on embroidered logos.

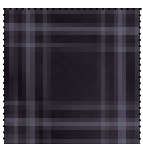
Style: FC058 & FC064



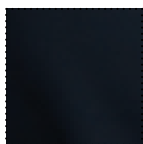
Outerwear Fabric



Features DINTEX® — a special membrane guaranteed to keep you dry and comfortable from the inside to the outside. Suitable for all weather conditions, DINTEX® provides an impenetrable layer to prevent water and wind coming in, while keeping the highest level of breathability.



black plaid



black



brown plaid



navy



olive



camel



plum



red



slate

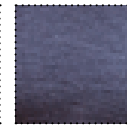
Merino Wool Fabric



Merino wool has an extra fine weave, is lightweight and soft. Merino wool is known for the ability to regulate natural body temperature. Wicks moisture away from the body allowing the skin to breathe.



black



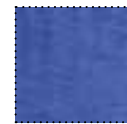
heather grey



funghi



royal blue



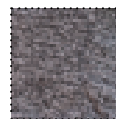
lavender

Wool Blend Soft Shell Fabric

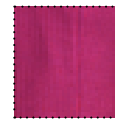
Intuitive style! Soft shell fabric with wool blend exterior and soft fleece backing. Waterproof and windproof, yet breathable with four way stretch.



black



heather grey



raspberry

