

HUMAN TOUCH® MODELS



IMPECCABLE
COLLABORATION
ULTIMATE
COMFORT

We pair our pedispas with the best massage chairs



Beauty for the eyes,
body and soul.

Human Touch® PediSpa Massage Chairs, meticulously designed and engineered in the United States, and designed with the highest quality components and materials, these remarkable chairs elevate wellness and comfort to beautiful new levels.

The best of Human Touch®

HT 245 PS

HT 045 PS

HT 044 PS

HT-245-PS

HT-245-PS
CUSTOM COLORS
AVAILABLE



HT-044-PS



HT-045-PS



Matching Pedicurist Stool
for wooden pedispas

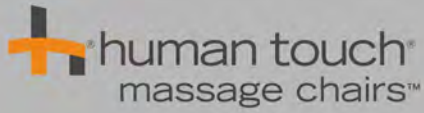


Matching Pedicurist Stool
for glass, metal and fiberglass pedispas.

Items in this catalog should be used as intended and in accordance with your state rules and regulations. Please check with your state board for permitted uses. Professional products use at your own risk. Alfalfa Nail Supply, will not be liable for any risk or damages after product has been purchased. Due to inconsistencies in the scanning/printing process, all printed colors shown may vary slightly from the actual color of the items.

Standard Human Touch® massage chair features

Standard Human Touch® massage chair features



Front View



Back View

MECHANISM
Mechanism
replace easily with
color coded
disconnectors



PCB BOX
Replace easily
with color coded
dis-connectors



90°

90° ROTATING
ARMRESTS



7"

POWER 7" CHAIR
FORWARD AND
BACKWARD



90°-
145°

POWER 90° - 145°
CHAIR RECLINE

FUNCTIONAL and PRACTICAL FEATURES



Rich, water and
chemical-resistant,
leather-like (Marine
PU) upholstery



Remote control easy
replacement with a
phone plug



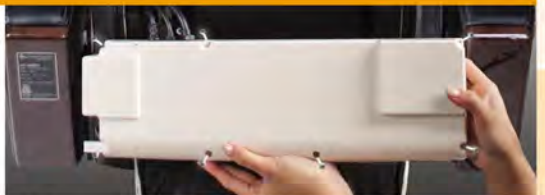
15 minute auto
shut-off
AC 110-120V/60Hz
power supply



Chemical resistant
manicure tray



Access to the interior
for servicing via zipper



PCB Box can be easily
removed



2 pockets on back for extra storage to hold price menus or technician clipboard



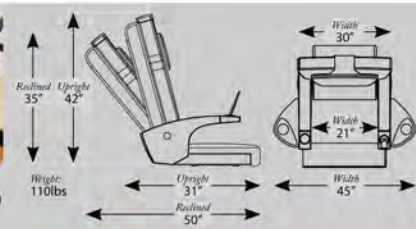
Side pockets for remote control on both sides of chair



Removable state-of-the-art click manicure tables



Multi-function arm socket system. Built-in cup holder, convertible to remote control holder. Purse hanger on both sides



HT-245-PS



2 pockets on back for extra storage to hold price menus or technician clipboard



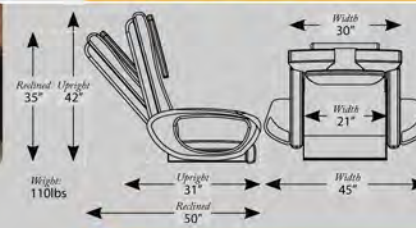
Side pockets for remote control on both sides of chair



Removable state-of-the-art click manicure tables



Cup holder



HT-045-PS



2 pockets on back for extra storage to hold price menus or technician clipboard



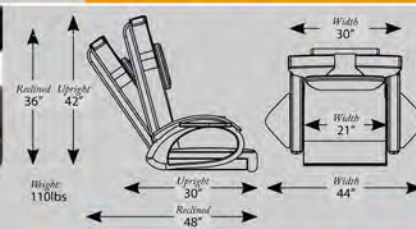
Side pockets for remote control on both sides of chair



Padded espresso armrest with wood grain finish



Manicure tray



HT-044-PS

Available Colors: Duo tone Espresso Cream, Duo tone Espresso Red, Duo tone Espresso Cappuccino, Espresso

HUMAN TOUCH® MASSAGE CHAIR at a glance

MASSAGE TECHNIQUES

KNEADING



WHAT IT DOES

Kneads your back in a small, circular motion on both sides of your spine simultaneously.

BENEFITS

Relieves tension and soreness by lifting and stretching muscles. Improves circulation and helps bring vital nutrients to the spinal area.

KNEADING + PERCUSSION



Combines circular kneading motion with rapid-tapping percussion strokes.

Relieves muscle tension and spinal pressure, improves circulation and invigorates the back, all at once.

PERCUSSION



Alternates rapid-tapping strokes along the spine to stimulate both spinal muscles and spinal joint areas, emulating the percussive massage technique used in sports medicine for deep muscle therapy.

Flexes spinal joints and relieves pressure on the spinal column, invigorating the entire back area.

ROLLING



Rolls gently up and down your back near your spine.

Warms and loosens your muscles, preparing your back for deeper massage. Relieves muscle tension, improves circulation and relaxes the back.

Your Alfalfa Pedispa lets you customize your massage using a wide variety of massage techniques. Choose from three stationary massage techniques and a rolling massage, or combine them! Or, simply select one of the auto massage experiences and let the chair take control. No matter how you use it, your Alfalfa Pedispa offers maximum massage flexibility and refreshing benefits.

HT Model HT-044-PS HT-045-PS HT-245-PS

Roll	●	●	●
Kneading	●	●	●
Compression			●
Percussion	●	●	●
Kneading + Percussion	●	●	●

FEATURING BODY MAP REMOTE CONTROL

STOP
Stops the massage and parks the massage mechanism at the top of the backrest.

POWER
Lights to indicate that the power switch is on.

SEAT
Slides the chair forward and backward for ideal pedicure position.

AUTO MASSAGE EXPERIENCES

Three unique auto massage experiences automatically massage your back for 15 minutes, using a variety of massage techniques. The corresponding LED lights to indicate which massage technique is currently in use.



RESTORE
Automatically restores the backrest to the full upright position.

BACK
Effortlessly reclines and inclines the backrest to the desired position.

RANGE
Select from high, medium, or low vertical massage range settings, based on your height.

WIDTH
Select from wide, medium, or narrow massage width settings, based on the width of your back.

MASSAGE TECHNIQUES
Select from four massage techniques to customize your massage. Rolling can be combined with any of the other three techniques.

WHERE DO YOU WANT TO FEEL BETTER?
Simply press the number that corresponds with the area of your back you want to feel better, then sit back and let the chair do the rest!

THERE'S NO TOUCH LIKE THE HUMAN TOUCH®

MASSAGE TECHNIQUES	WHAT IT DOES	BENEFITS
<p>KNEADING</p>	Kneads your back in a small, circular motion on both sides of your spine simultaneously.	Relieves tension and soreness by lifting and stretching muscles. Improves circulation and helps bring vital nutrients to the spinal area.
<p>KNEADING + PERCUSSION</p>	Combines circular kneading motion with rapid-tapping percussion strokes.	Relieves muscle tension and spinal pressure, improves circulation and invigorates the back, all at once.
<p>PERCUSSION</p>	Alternates rapid-tapping strokes along the spine to stimulate both spinal muscles and spinal joint areas, emulating the percussive massage technique used in sports medicine for deep muscle therapy.	Flexes spinal joints and relieves pressure on the spinal column, invigorating the entire back area.
<p>ROLLING</p>	Rolls gently up and down your back near your spine.	Warms and loosens your muscles, preparing your back for deeper massage. Relieves muscle tension, improves circulation and relaxes the back.



Human Touch® massage chair features:

- Power 90° - 145° chair recline
- 15 minute auto shut-off
- AC 110-120V/60Hz power supply
- 90° rotating armrests
- Power 7" chair forward and backward



HT branded upholstery

- Contrast stitches, velcro design and rich, water and chemical resistant upholstery.
- Deluxe wide head cushion
- Extra width seat provides oversized comfort and looks luxurious. The widest seat in the industry.
- Upholstery in designer colors



Human Touch® Technology™ Massage chair

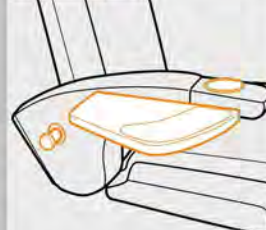
Alfalfa Pedispa feature Human Touch® Technology™ Massage. It emulates the techniques used by chiropractors, massage therapists and other professionals for the treatment and care of the back, spine and feet.

Robotic Massage HT Technology™ starts with a multi-patented robotic mechanism that works like one's wrists, arms and hands. The mechanism follows the natural curves of the spine so as a result, delivers a massage that feels remarkably human.



Industry changing multi function arm socket system

- Arm sockets can receive cup holders, or a controller console.
- Left or right configurations can be changed as needed.



Left and right option cup holders

Allows quick and easy configuring of chairs for individual or paired line up.





**CUSTOM
HT-245 PADSET
COLOR**

Call us to learn how to customize your HT-245-PS color. Additional charges and lead time applies.

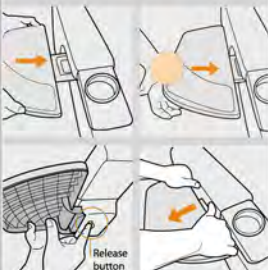
NEW COLORS

HT-245-PS
STATE OF ART HUMAN
TOUCH® MASSAGE CHAIR



Industry changing left and right quick release removable "click tables"

- Tables are easy to install left or right. No tools required.
- Chair appearance is streamlined because tables can be stored away out of sight when not being used.
- Tables are easily replaced or updated as new table shapes and functions are developed.



Industry unique Left and right pop-out purse hangers

- Keeps purse up off of the floor protecting it from spills and dirt.
- Hook holds onto purse regardless of whether the arm is rotated up or down.

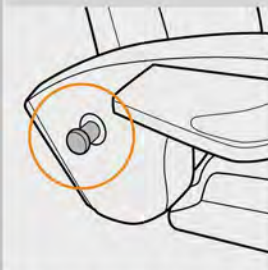
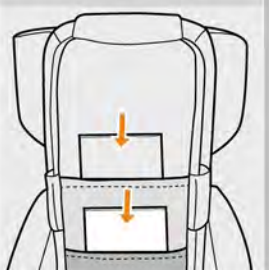


Table storage pocket
Convenient storage hides quick release tables away when not in use.

Clip board pocket
Keeps critical records clip board coordinated with the correct chair.



Left and right magnetic controller holders.
Convertible controller storage built in.



Industry changing left or right rotating controller console

- Controller console works with arm socket system for left or right install. No tools required.
- Allows the controller to be used in a console mode freeing up customer hands.
- Can be oriented toward client or operator. Adds technology appearance value to the controller and the chair.

